

Name: \_\_\_\_\_

## Parts of the horse head

Please unscramble the words below

Created on TheTeachersCorner.net Scramble Maker

- |     |          |       |                             |
|-----|----------|-------|-----------------------------|
| 1.  | eamn     | _____ | Long hair along the neck    |
| 2.  | irrolst  | _____ | Used to breathe             |
| 3.  | plol     | _____ | Bone between the ears       |
| 4.  | sera     | _____ | Used to hear                |
| 5.  | hkece    | _____ | On the side of the face     |
| 6.  | trsiehw  | _____ | Where the mane ends         |
| 7.  | yee      | _____ | Used to see                 |
| 8.  | uezlzm   | _____ | Where the lips and nose are |
| 9.  | frlckooe | _____ | Hair over the forehead      |
| 10. | ecrst    | _____ | Between the neck and mane   |



**Pretty Pony Pastures**  
**[www.prettyponypastures.org](http://www.prettyponypastures.org)**

Name: \_\_\_\_\_

## Parts of the horse head

Please unscramble the words below

Created on TheTeachersCorner.net Scramble Maker

1.	eamn	mane	Long hair along the neck
2.	irrolst	nostril	Used to breathe
3.	plol	poll	Bone between the ears
4.	sera	ears	Used to hear
5.	hkece	cheek	On the side of the face
6.	trsiehw	withers	Where the mane ends
7.	yee	eye	Used to see
8.	uezlzm	muzzle	Where the lips and nose are
9.	frlckooe	forelock	Hair over the forehead
10.	ecrst	crest	Between the neck and mane

# Parts of the horse head

Find the parts of the horse head

X V L E M X B G J M I X R O E L S L O H  
K T K B Z K N N D P A B X Y N O N E S B  
Y R R D V S F X P J U N E M F T O T X S  
T H L D S G W U U I E B E X V U E Z L J  
T K L P A E C P W N M W S E X O H W M Y  
M B O D K W Z Q Q Q C R B J Z G I P V B  
P D P J V M U Y E Q T O W Y Z U T Z V Y  
I W H E F S E A G R R Z J R S C D L L T  
O B Z L I R R U R U J C X Z C Y A O K J  
D F W Z X S J T B V M V F B Y H H U J C  
A Z V Z M M F I F F E I K Y Z F M O G H  
F Q N U A L Z J A Q C N C Q L T R K Q E  
Q V K M C S N L A U J J O G S B C Y Y E  
T Q Q X J D O S U U N E L R S P B Z L K  
W W V D U I S J G P R B E I P N K L F R  
H P N G J V T Q U Q A H R P A E I G P X  
M Q G Z M A R Y T A T F O I B U D D C H  
E P F K O I I O Q I C G F D C R E S T Q  
M H Y H O L L U W H D Y O V T N H Q Y Z  
U F F F J Q K F U T T L Y T N T A X X K

---

MANE  
NOSTRIL  
POLL  
EARS

CHEEK  
WITHERS  
EYE

MUZZLE  
FORELOCK  
CREST



# Parts of the horse head

Can you find the parts of the horse's head?

P E O N X H W X Y C K V S O B D I U Y E  
L I E T A M H H W H L R C Y Z U S B N C  
T I D H K F Z K D E A M W P V F F A S J  
V Z R C F A O S U E Q Q T I P B M V Y V  
G F U I E F E B Z K B D C I T O P Y E O  
A V S Y H Z E F Y J E P P N G H W Y X G  
M N L Q N S H Y O O G F G Y H Z E X V P  
U Q T X E L H N W R F V T A X U R R D I  
Z P K U H F J B X I E K H J I A Q T S S  
Z Y N M G F Z Z N J X L N I B M L I G U  
L M H H L C L P F E N U O M D F S N T H  
E W C H J G G U K Q L M S C M Y G O T S  
F B L R J D Z U B W N M T L K R F Z K M  
D G C I V L T Z L U W Q R X I M E R I L  
W M Y Y L C Y V A O Y B I Z T M S L W H  
I F T O T C R X W W V Z L E X Y J U O N  
W I P R Z W C E X W R M E K A P N R S A  
F C U G A K Y E S F C S V T K M Q M J D  
Q I B T U C M V Z T Y P G I B E W W M J  
Q P F K C A B U X P Z U V Q B Z T W T R

MANE  
CHEEK  
MUZZLE  
NOSTRIL

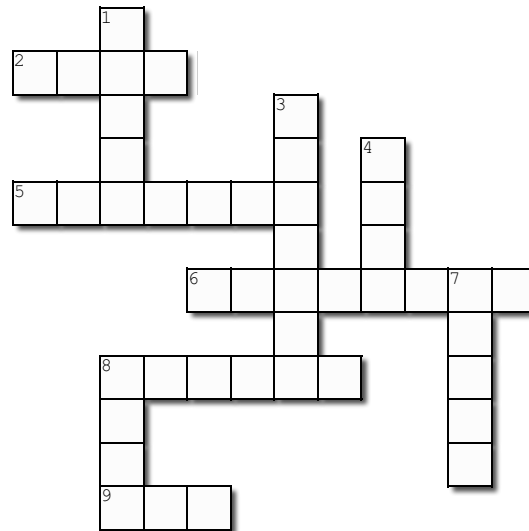
WITHERS  
FORELOCK  
POLL

EYE  
CREST  
EARS

Name: \_\_\_\_\_

## Parts of the horse head

Complete the crossword puzzle below



Created using the Crossword Maker on TheTeachersCorner.net

### Across

- Used to hear
- Where the mane ends
- Hair over the forehead
- Where the lips nose are
- Used to see

### Down

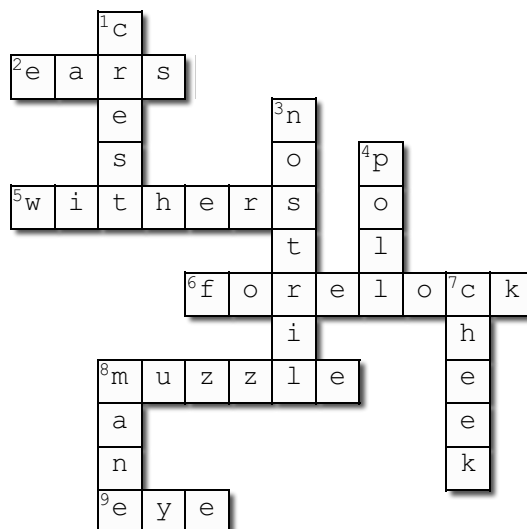
- Between the neck and mane
- Used to breathe
- Bone between the ears
- On the side of the face
- Long hair along the neck



Name: \_\_\_\_\_

## Parts of the horse head

Complete the crossword puzzle below



Created using the Crossword Maker on TheTeachersCorner.net

### Across

2. Used to hear (**ears**)
5. At the end of the neck (**withers**)
6. Hair over the forehead (**forelock**)
8. Where the lips nose are (**muzzle**)
9. Used to see (**eye**)

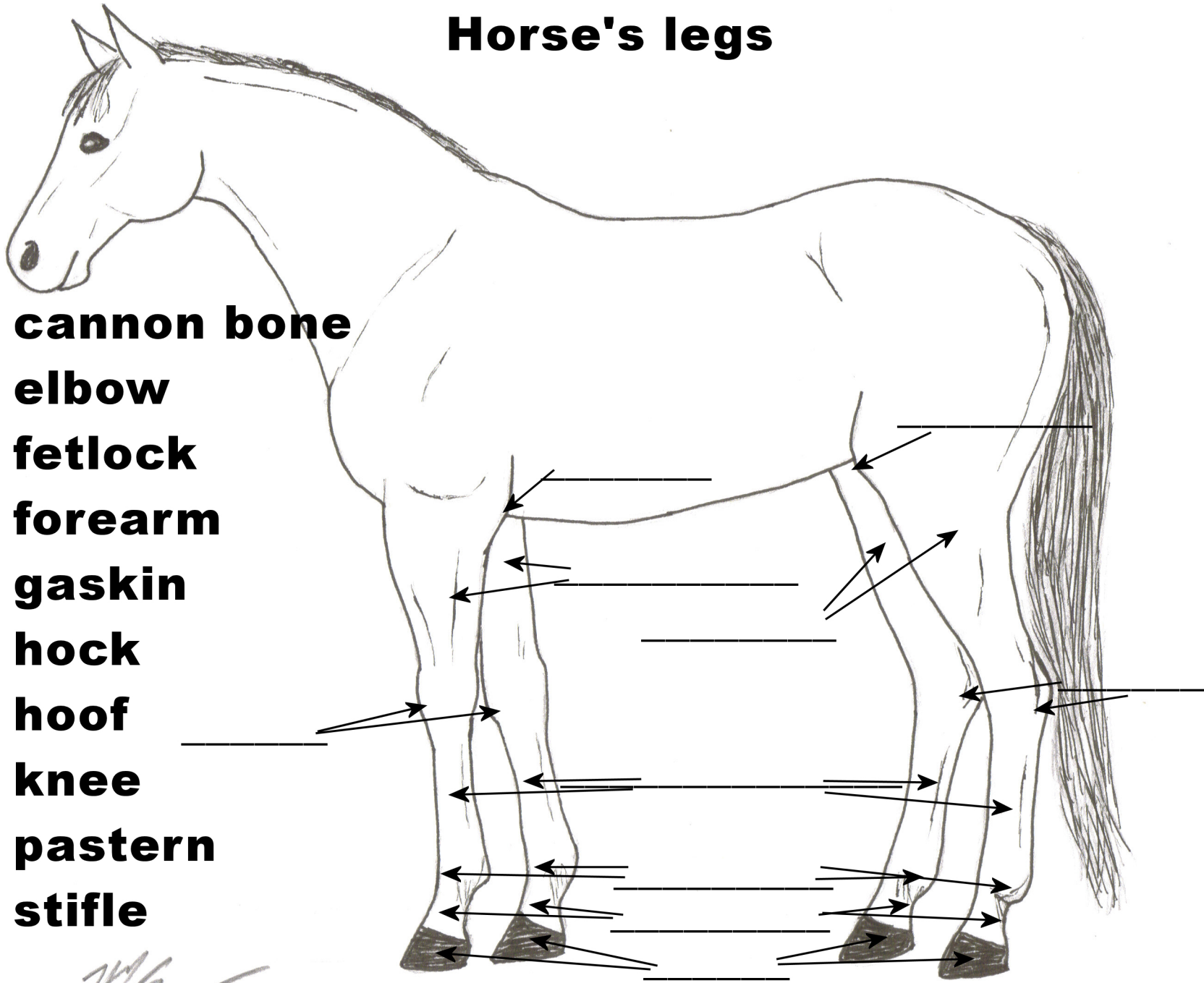
### Down

1. Between the neck and mane (**crest**)
3. Used to breathe (**nostril**)
4. Bone between the ears (**poll**)
7. On the side of the face (**cheek**)
8. Long hair along the neck (**mane**)



# Horse's legs

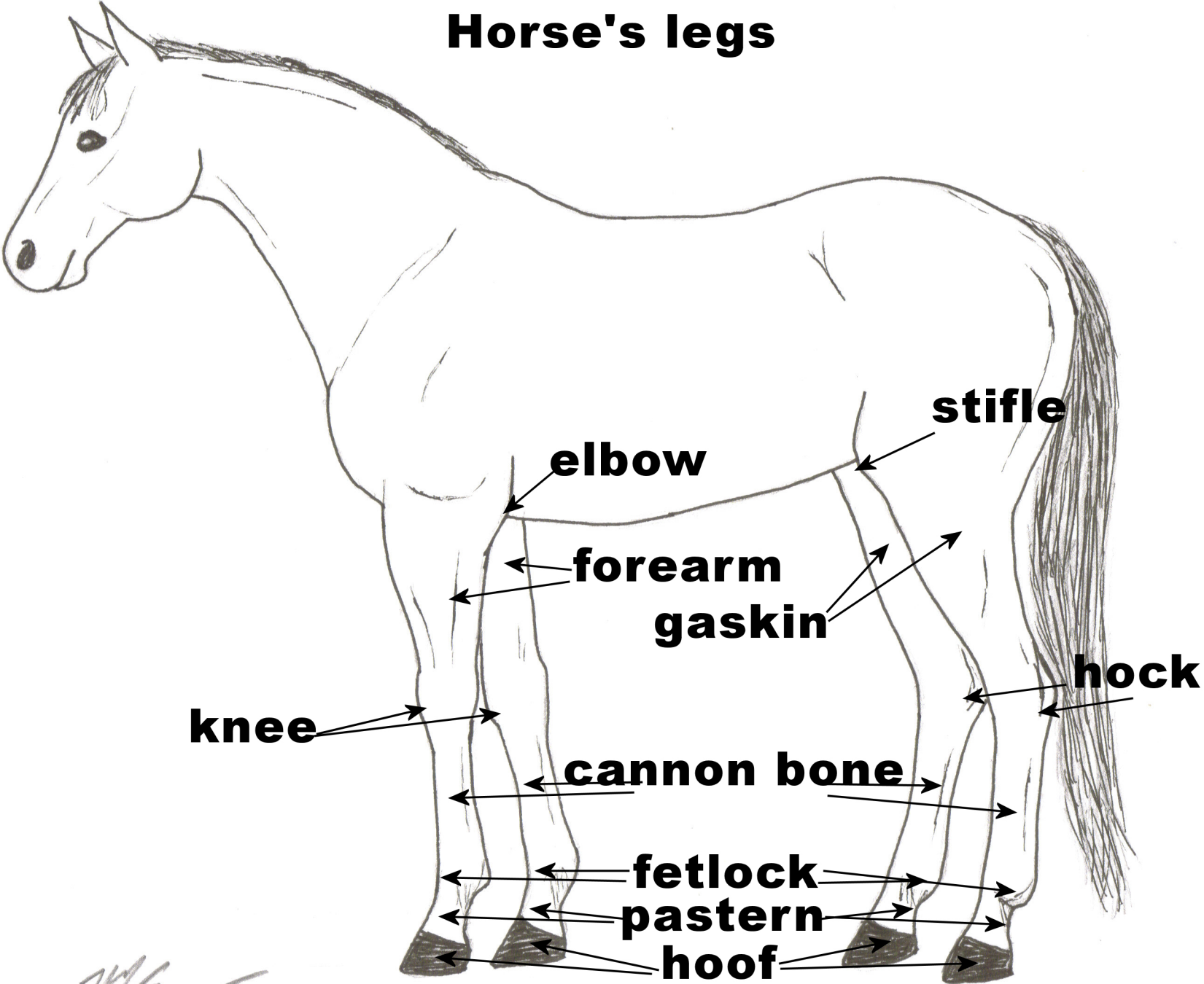
- cannon bone**
- elbow**
- fetlock**
- forearm**
- gaskin**
- hock**
- hoof**
- knee**
- pastern**
- stifle**



*Handwritten signature*



# Horse's legs



*Handwritten signature*

## Parts of the horse legs

Please unscramble the words below to make a part of the horse leg.

Created on TheTeachersCorner.net Scramble Maker

- |                 |                                       |
|-----------------|---------------------------------------|
| 1. fclokte      | like your ankle                       |
| 2. bewlo        | you have one on each arm              |
| 3. oohf         | the horse walks on this               |
| 4. kniags       | It's part of the back leg             |
| 5. nsrptea      | above the hoof and below the fetlock  |
| 6. keen         | you have one on each leg              |
| 7. kcho         | looks like a backwards knee           |
| 8. ifslte       | this can lock up the horse's back leg |
| 9. ermfrao      | it's above the knee                   |
| 10. ncnoan obne | it's below the knee                   |



Name: \_\_\_\_\_

## Parts of the horse legs

Please unscramble the words below to make a part of the horse leg.

Created on TheTeachersCorner.net Scramble Maker

- |     |             |             |                                       |
|-----|-------------|-------------|---------------------------------------|
| 1.  | fclokte     | fetlock     | like your ankle                       |
| 2.  | bewlo       | elbow       | you have one on each arm              |
| 3.  | oohf        | hoof        | the horse walks on this               |
| 4.  | kniags      | gaskin      | It's part of the back leg             |
| 5.  | nsrptea     | pastern     | above the hoof and below the fetlock  |
| 6.  | keen        | knee        | you have one on each leg              |
| 7.  | kcho        | hock        | looks like a backwards knee           |
| 8.  | ifslte      | stifle      | this can lock up the horse's back leg |
| 9.  | ermfrao     | forearm     | it's above the knee                   |
| 10. | ncnoan obne | cannon bone | it's below the knee                   |

## Parts of the horse legs

Can you find the parts of the horse's legs? It could be the front leg, the back leg, or both.

H C G R W T E N O R O C D W O J U K D A  
F O O F O O H U U B C G V A X U J S P M  
F X N L B P O Y Y K P A M P H B C Y H P  
W E W J L F Y U V B A G N L Q Y O Q R P  
F E L S E P H L C W S C L N T X E V T M  
R I Q F Z K F R Q W T Z W M O T O A O Q  
U M H A I H G H P Q E V O W R N W D K X  
H K M D F T K R N R R Q E W J A B Q W U  
P O U C E M S G M G N Y I C J Z E O T G  
E O J E O C F N B Y K S Y O K H K R N P  
F G K B N R E X D T F K W V Q M U V O E  
U A N F I S A O L X L I L Y B Q R Y Y F  
C B J H U H T D S Y I Q T U M N G Z D J  
B M O C V F H K C O L T E F X S I I R D  
Q V Q L T F E F W D W F R E O Z W T B K  
W F R U F E R Q A J Q U Z V K Y P Y C R  
M N Q V N C S M B Q D L P A Y J Y O P G  
O W P K N X D A A O M L I T R M H Y E D  
Q C X G Z R V J L K O K D C K M V T Q B  
E C C U G I C G S E J R L A K I P D W F

---

CANNONBONE  
KNEE  
CORONET  
HOOF

FOREARM  
FETLOCK  
HOCK  
STIFLE

ELBOW  
FEATHERS  
PASTERN



## Parts of the horse legs

Can you find the parts of the horse's legs? It could be the front leg, the back leg, or both.

H C G R W T E N O R O C D W O J U K D A  
F O O F O O H U U B C G V A X U J S P M  
F X N L B P O Y Y K P A M P H B C Y H P  
W E W J L F Y U V B A G N L Q Y O Q R P  
F E L S E P H L C W S C L N T X E V T M  
R I Q F Z K F R Q W T Z W M O T O A O Q  
U M H A I H G H P Q E V O W R N W D K X  
H K M D F T K R N R R Q E W J A B Q W U  
P O U C E M S G M G N Y I C J Z E O T G  
E O J E O C F N B Y K S Y O K H K R N P  
F G K B N R E X D T F K W V Q M U V O E  
U A N F I S A O L X L I L Y B Q R Y Y F  
C B J H U H T D S Y I Q T U M N G Z D J  
B M O C V F H K C O L T E F X S I I R D  
Q V Q L T F E F W D W F R E O Z W T B K  
W F R U F E R Q A J Q U Z V K Y P Y C R  
M N Q V N C S M B Q D L P A Y J Y O P G  
O W P K N X D A A O M L I T R M H Y E D  
Q C X G Z R V J L K O K D C K M V T Q B  
E C C U G I C G S E J R L A K I P D W F

CANNONBONE  
KNEE  
CORONET  
HOOF

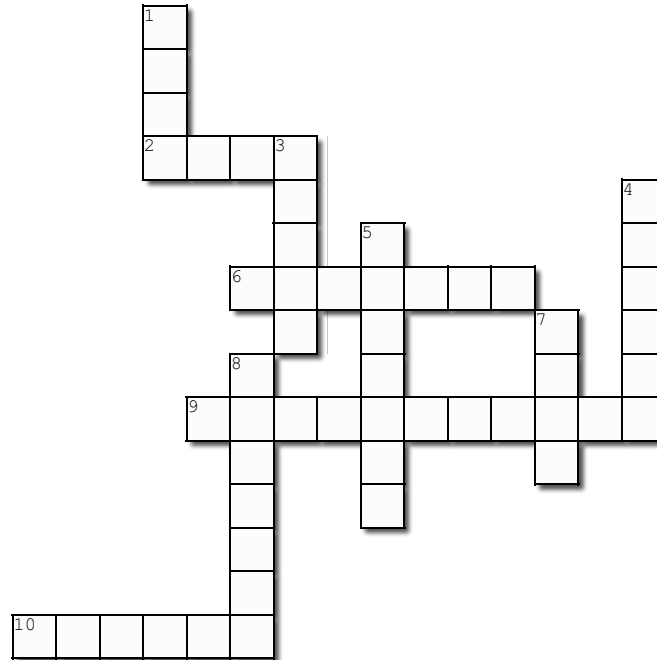
FOREARM  
FETLOCK  
HOCK  
STIFLE

ELBOW  
FEATHERS  
PASTERNS

Name: \_\_\_\_\_

## Parts of the horse legs

Complete the crossword puzzle below



Created using the Crossword Maker on TheTeachersCorner.net

### Across

- 2. Bends - you have one on each leg
- 6. Located above the knee
- 9. Located below the knee
- 10. Part of the back leg

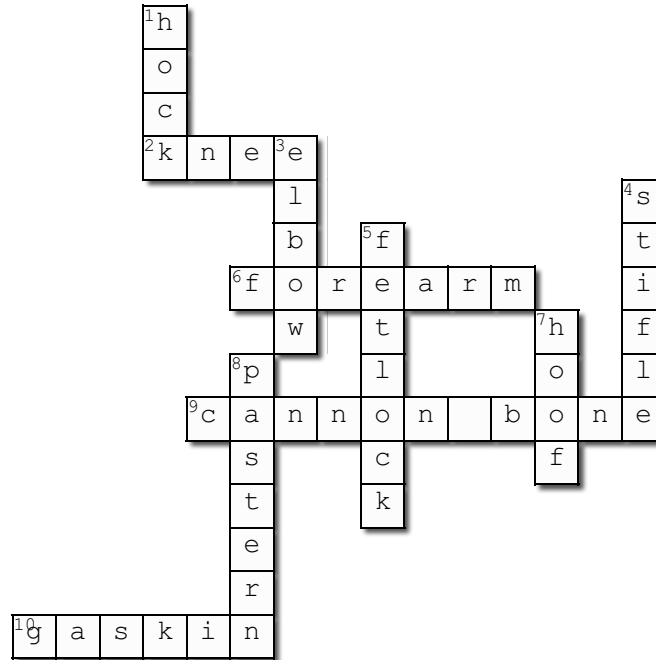
### Down

- 1. Looks like a backwards knee
- 3. Bends you have one on each arm
- 4. This locks so the horse can sleep standing up
- 5. Like your ankle
- 7. The horse walks on this
- 8. Above the hoof and below the fetlock



## Parts of the horse legs

Complete the crossword puzzle below



Created using the Crossword Maker on TheTeachersCorner.net

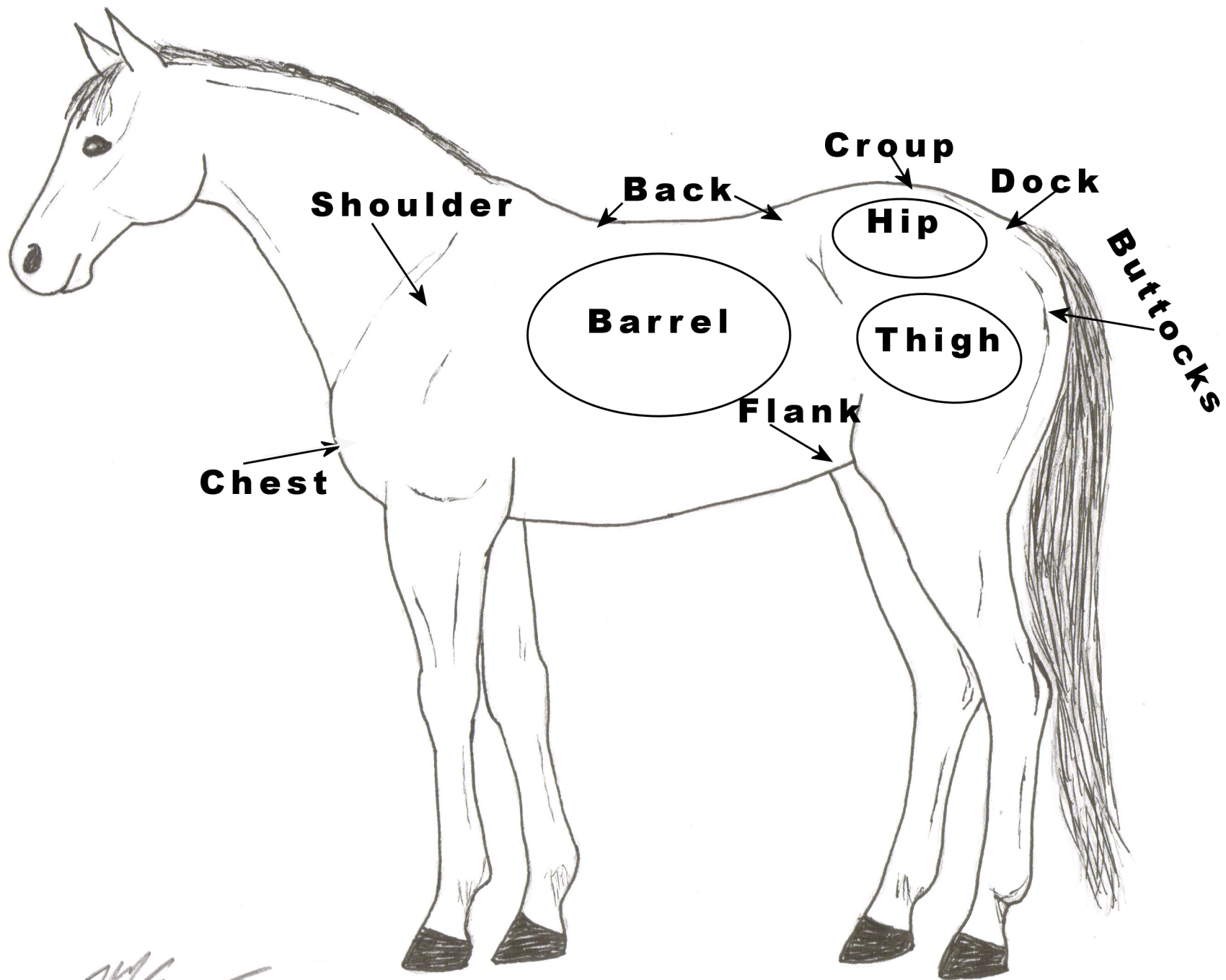
### Across

2. Bends - you have one on each leg (**knee**)
6. Located above the knee (**forearm**)
9. Located below the knee (**cannon bone**)
10. Part of the back leg (**gaskin**)

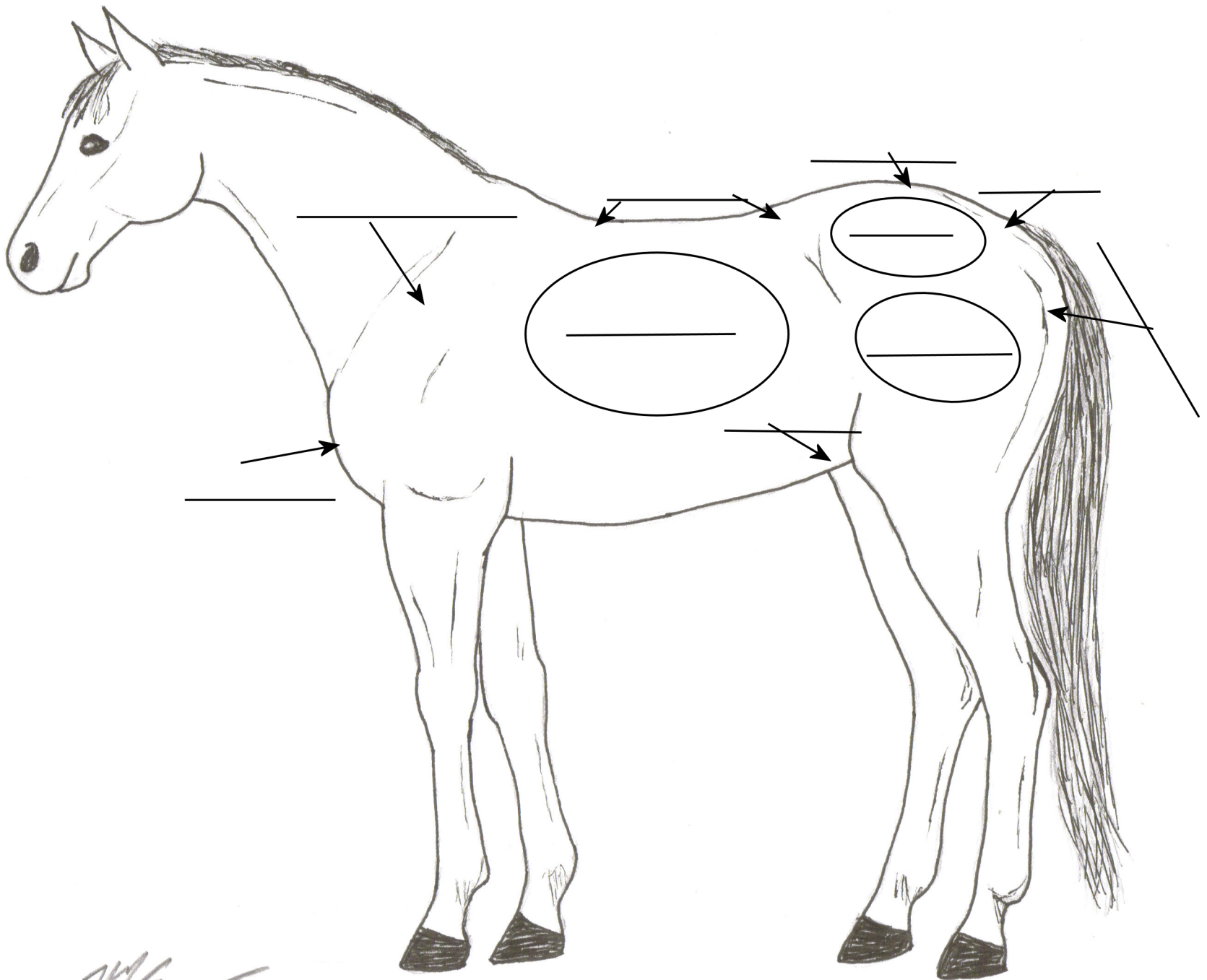
### Down

1. Looks like a backwards knee (**hock**)
3. Bends you have one on each arm (**elbow**)
4. This locks so the horse can sleep standing up (**stifle**)
5. Like your ankle (**fetlock**)
7. The horse walks on this (**hoof**)
8. Above the hoof and below the fetlock (**pastern**)





*Handwritten signature*



*Handwritten signature*



Name: \_\_\_\_\_

## Parts of the horse body

Please unscramble the words below

Created on TheTeachersCorner.net Scramble Maker

- |     |          |       |   |
|-----|----------|-------|---|
| 1.  | ouhrseld | _____ | Goes from the withers to the point of shoulder                    |
| 2.  | kodc     | _____ | Root of the tail  |
| 3.  | nafkl    | _____ | Where the hind legs and the barrel meet                           |
| 4.  | tutoskbc | _____ | The hindquarters behind the thighs and below the root of the tail |
| 5.  | bcka     | _____ | The area where the saddle sits                                    |
| 6.  | aitl     | _____ | The long hairs which grow from the dock                           |
| 7.  | hip      | _____ | A joint in the pelvic area  |
| 8.  | cseth    | _____ | The front part of the horse's body                                |
| 9.  | pcruo    | _____ | The top line of the hindquarters                                  |
| 10. | elbrra   | _____ | The body of the horse   |



Name: \_\_\_\_\_

## Parts of the horse body

Please unscramble the words below

Created on TheTeachersCorner.net Scramble Maker

1.	ouhrseld	shoulder	Goes from the withers to the point of shoulder
2.	kodc	dock	Root of the tail
3.	nafkl	flank	Where the hind legs and the barrel meet
4.	tutoskbc	buttocks	The hindquarters behind the thighs and below the root of the tail
5.	bcka	back	The area where the saddle sits
6.	aitl	tail	The long hairs which grow from the dock
7.	hip	hip	A joint in the pelvic area
8.	cseth	chest	The front part of the horse's body
9.	pcruo	croup	The top line of the hindquarters
10.	elbrra	barrel	The body of the horse

## Parts of the horse body

Can you find the parts of the horse's body?

P M D V T B N R P X W B R O Z Y K O F W  
O B V C W E U Z F E K N A L F I C W P S  
T N Z E Z G D T J D O K H M V P O R T Z  
V H M D W C K V T W I X U V B S D F K L  
Y X J H G V I P C O W D A W W W D S E R  
Y O C E Z I Q H Q A C F T L L H E N W C  
U M X M E F I U T S L K C A I E C O L M  
Y G J J D N M C I U P J S N I G C E E U  
M F W Y J D K B N C B A R R E L W B B A  
T X D N L E G K K S O A C S Y C N B T Y  
A Y T Q Z L L T G Q Q W O O K V O O C E  
N U K D B D R H S H V E P X A C G H M A  
H O O T K V N I Y Y X R A A O M A G X E  
T R W L E Y R G Z D W F M X T Y U B O N  
W O T D D G O H J V S U J J E S J Y R G  
W Q G E F C T Q N P T S E H C N V K C L  
N L X L Z S H O U L D E R K Y A F B L T  
D G S Y R D K H X T W G R I S Y I J O F  
B S A E S S U I Z O X A Y I F D R R R R  
W N G Y Q X A P U O R C V H L D C S J P

---

SHOULDER  
DOCK  
FLANK  
THIGH

BACK  
TAIL  
HIP  
CHEST

CROUP  
BARREL  
BUTTOCKS



# Parts of the horse body

Can you find the parts of the horses's body?

P M D V T B N R P X W B R O Z Y K O F W  
O B V C W E U Z F E K N A L F I C W P S  
T N Z E Z G D T J D O K H M V P O R T Z  
V H M D W C K V T W I X U V B S D F K L  
Y X J H G V I P C O W D A W W W D S E R  
Y O C E Z I Q H Q A C F T L L H E N W C  
U M X M E F I U T S L K C A I E C O L M  
Y G J J D N M C I U P J S N I G C E E U  
M F W Y J D K B N C B A R R E L W B B A  
T X D N L E G K K S O A C S Y C N B T Y  
A Y T Q Z L L T G Q Q W O O K V O O C E  
N U K D B D R H S H V E P X A C G H M A  
H O O T K V N I Y Y X R A A O M A G X E  
T R W L E Y R G Z D W F M X T Y U B O N  
W O T D D G O H J V S U J J E S J Y R G  
W Q G E F C T Q N P T S E H C N V K C L  
N L X L Z S H O U L D E R K Y A F B L T  
D G S Y R D K H X T W G R I S Y I J O F  
B S A E S S U I Z O X A Y I F D R R R R  
W N G Y Q X A P U O R C V H L D C S J P

SHOULDER  
DOCK  
FLANK  
THIGH

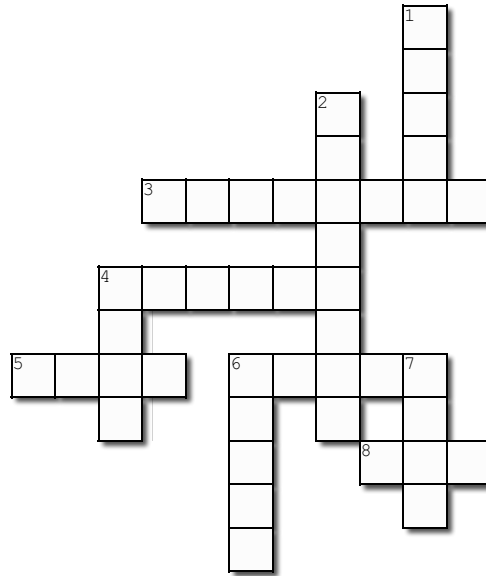
BACK  
TAIL  
HIP  
CHEST

CROUP  
BARREL  
BUTTOCKS

Name: \_\_\_\_\_

## Parts of the horse body

Complete the crossword puzzle below



Created using the Crossword Maker on TheTeachersCorner.net

### **Across**

3. The hindquarters behind the thighs and below the root of the tail
4. The body of the horse
5. Root of the tail
6. The front part of the horse's body
8. A joint in the pelvic area

### **Down**

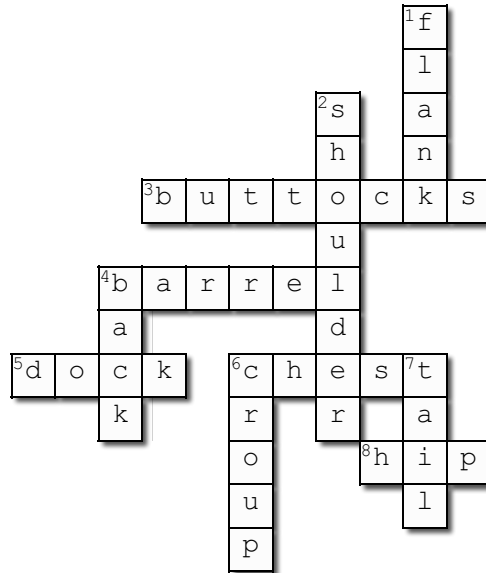
1. Where the hind legs and the barrel meet
2. Goes from the withers to the point of shoulder
4. The area where the saddle sits
6. The topline of the hindquarters
7. The long hairs which grow from the dock



**Pretty Pony Pastures**  
**www.prettyponypastures.org**

# Parts of the horse body

Complete the crossword puzzle below



Created using the Crossword Maker on TheTeachersCorner.net

## Across

3. The hindquarters behind the thighs and below the root of the tail (**buttocks**)
4. The body of the horse (**barrel**)
5. Root of the tail (**dock**)
6. The front part of the horse's body (**chest**)
8. A joint in the pelvic area (**hip**)

## Down

1. Where the hind legs and the barrel meet (**flank**)
2. Goes from the withers to the point of shoulder (**shoulder**)
4. The area where the saddle sits (**back**)
6. The topline of the hindquarters (**croup**)
7. The long hairs which grow from the dock (**tail**)